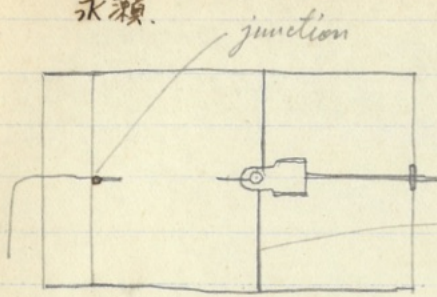


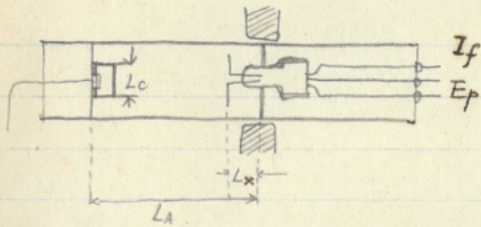
永瀬.



$\lambda = 22 \text{ cm.}$

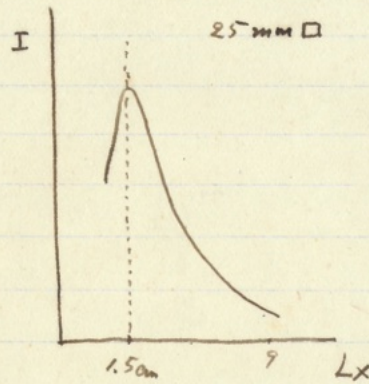
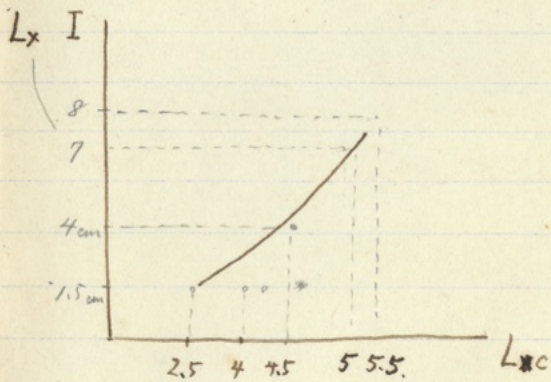
Loop wa Seihokei ni nite, son Akira wo kasta.

Shield — Usiro no Eibyō wo nozoku  
Plate voltage — constant.



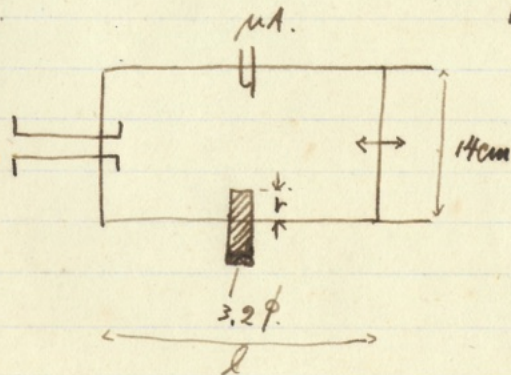
Max. cur. ni tanim LA no Atai wa, resonance value  $\pm 2\%$  de ittiuru.

$\lambda$ -range 20 ~ 23 cm



Max. I wo atarem LA Max I(LA, Lx) wo motomeru.

言橋.



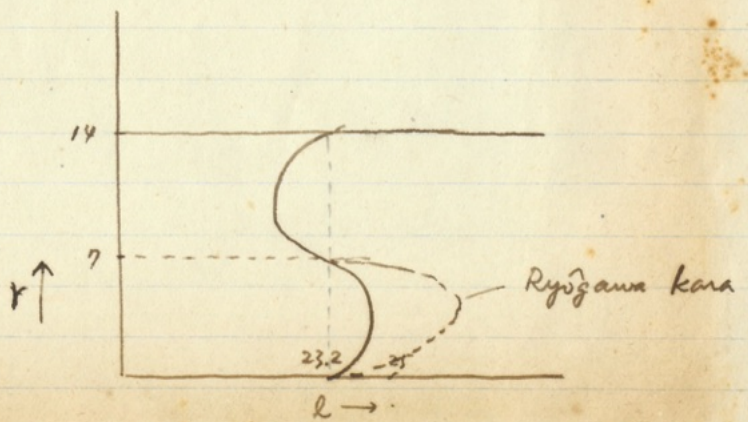
1° Yohi-Zikken.

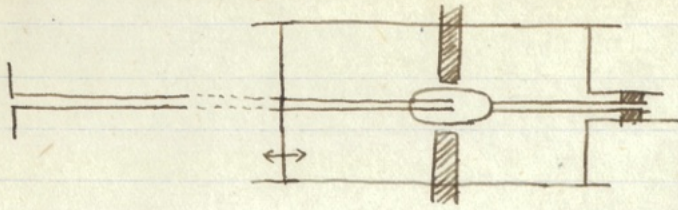
pole piece no Sarire ni yoru.  $\lambda$  no Heuka.

$$\lambda = \frac{1}{\sqrt{\frac{1}{l^2} + \left(\frac{k}{\pi}\right)^2 \frac{1}{R^2}}}$$

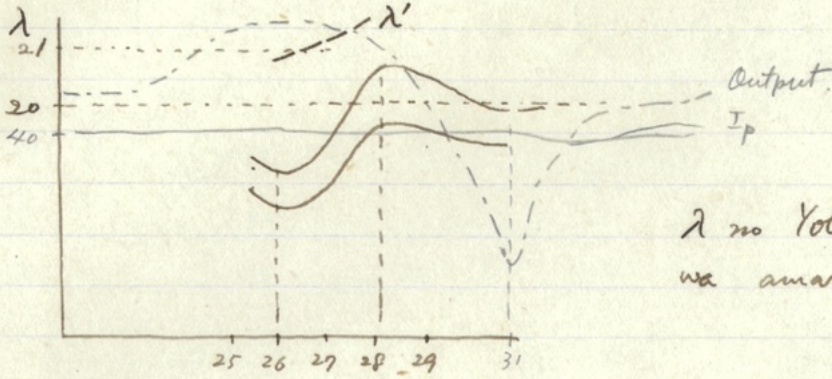
k wa hotondo pararamai

( $10^\circ$ )



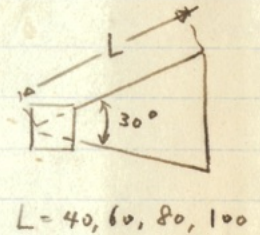
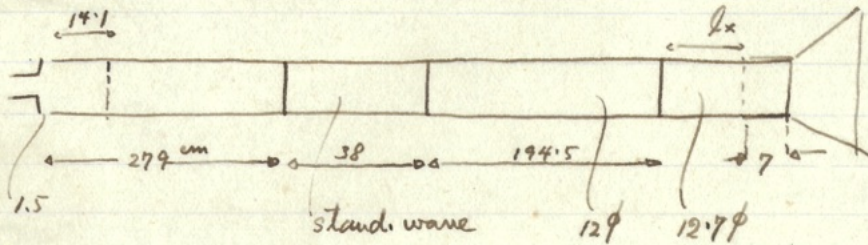
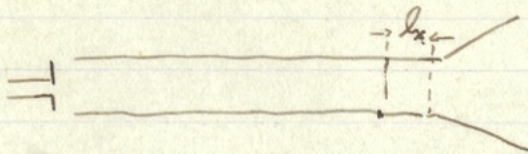


direct connection wo wotita  
 (practical sakana)  
 loop demo Locher lines demo  
 onazi Teido.

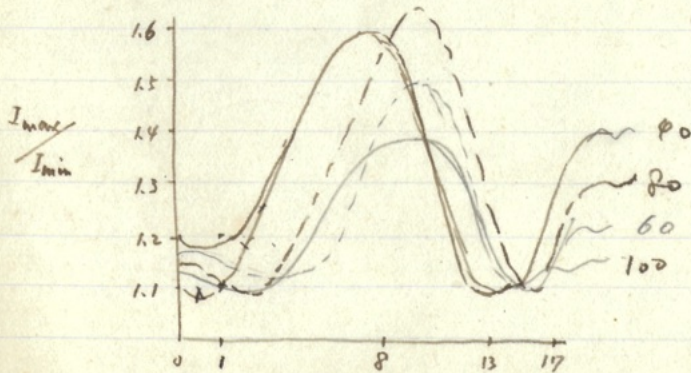


$\lambda$  no Yohi-Zikken pane horeirita Atai  
 wa amari yohi awanai.

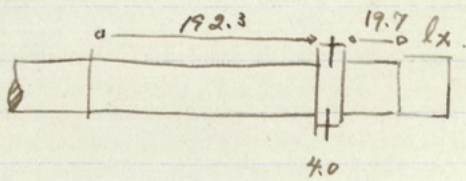
八木谷. Dohakan to Denzirappa no Seisō.



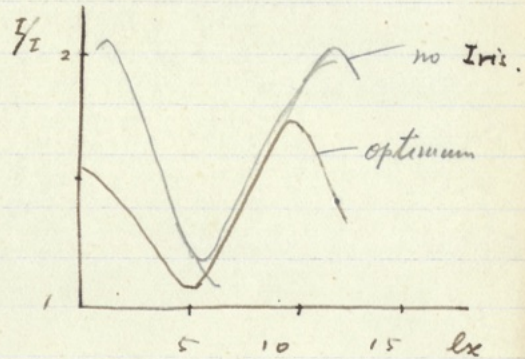
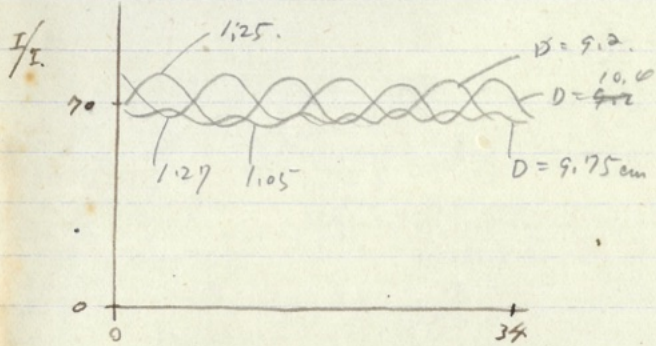
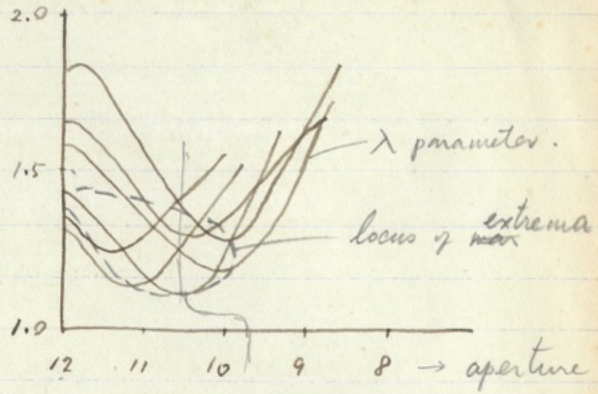
$\lambda_g = 24.7 \text{ cm}$



2° Sibori no site Baai.



$\lambda_g = 24.9 \text{ cm}$   
 $\lambda = 15.8$



3°

音所.

1° Ketugô.

Suitkikan no site Baai no Resonator  
 Yôkyôka-kairu to site no Kuidô.  
 2 izyo no Kuidô no Ketugô (matching)

2° Syunturyoku-toidasigotô.

Dipol do reisiruuru toki no antenna no Ite.  
 Coupling no Wôhû.

3° Sonota.

no Tameni

1: Dimension-henka no Nedi no Kim Baai, Sono Gikyô  
 (Gensai Nedi no Hukasa = 0.5 ~ 1 mm) 1/10 mm

2: Magari no Mondai